



AC
FURNITURE

GRADE 1

A
G
A
T
H
Y



CHIANTI



SPICED



TANGELO



MIMOSA



BAMBOO



GRASS



CALYPSO



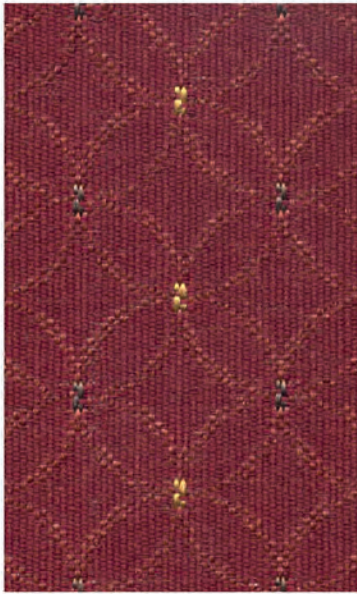
NAUTICA



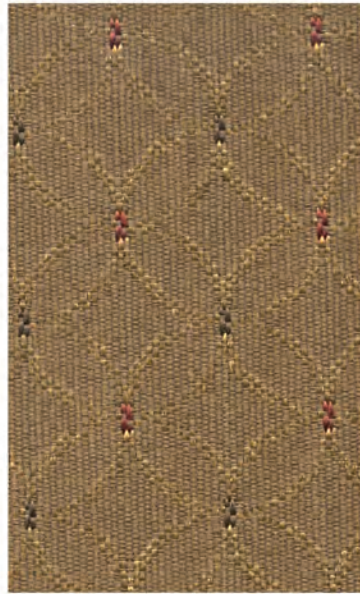
MOCHAMIST



STORM



RUST



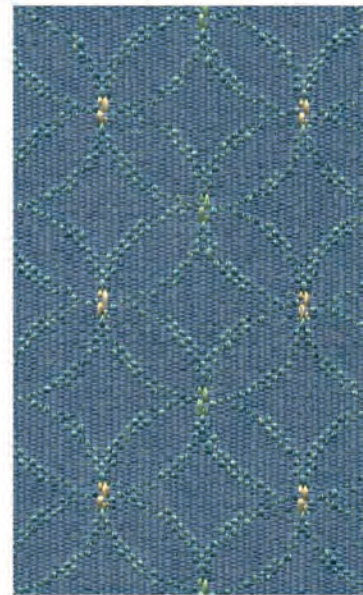
ANTIQUÉ



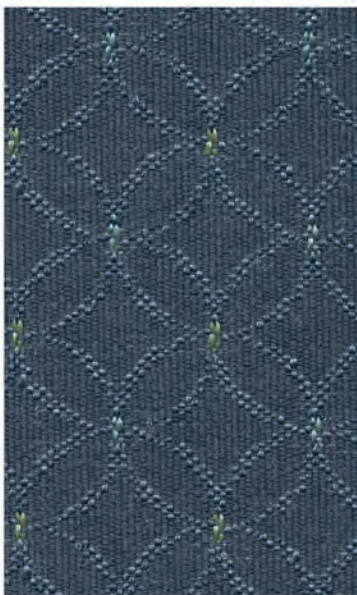
WHEATFIELD



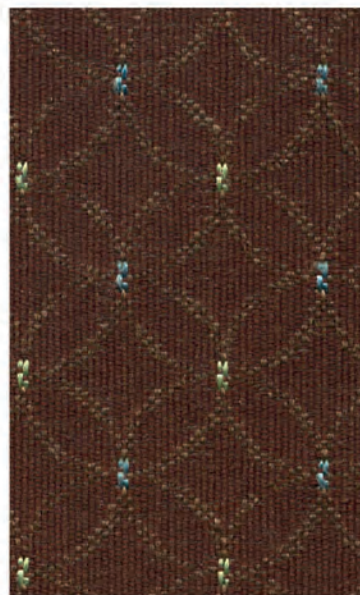
GRASS



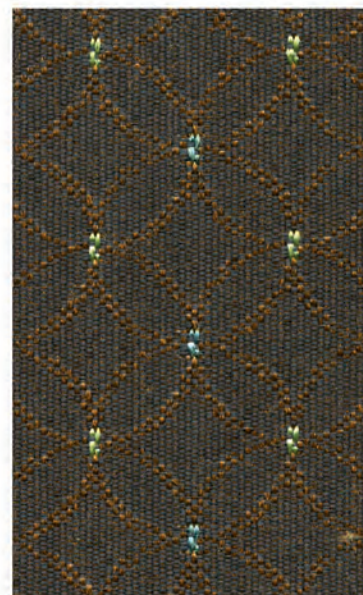
OCEAN



COSMOS



CHOCOLATE



NIGHT

A
R
R
G
E
N
T
O

C
A
N
T
A
T
A



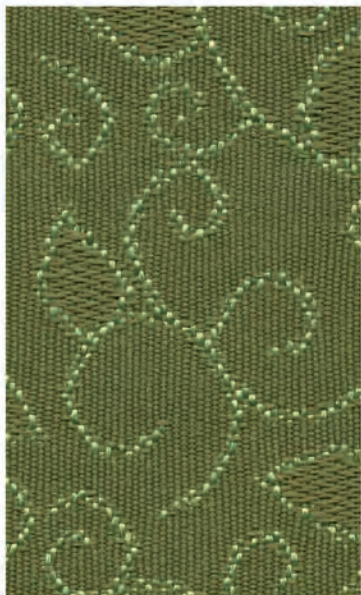
SPICED



TANGELO



BAMBOO



GRASS



SEASPRAY



STAR

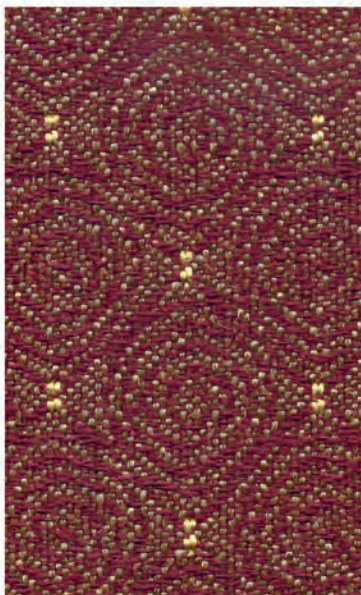


BASKET

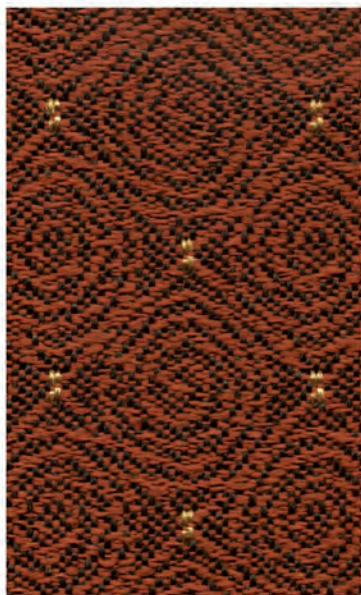


COLA

CHINCHILLA



MERLOT



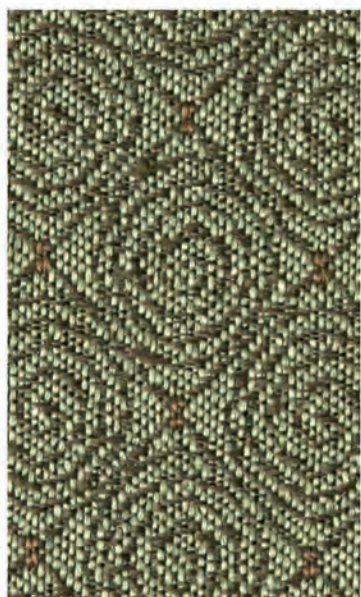
PUMPKIN



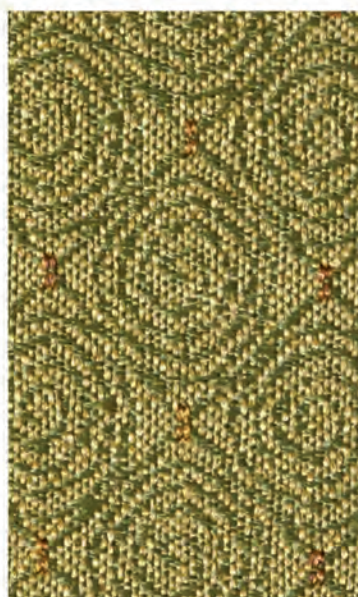
BASKET



CAFE



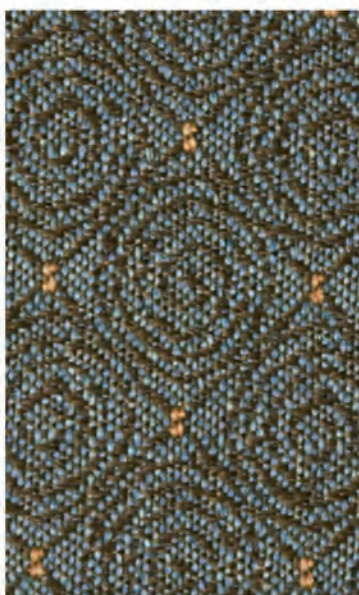
SPRING



LIMEADE



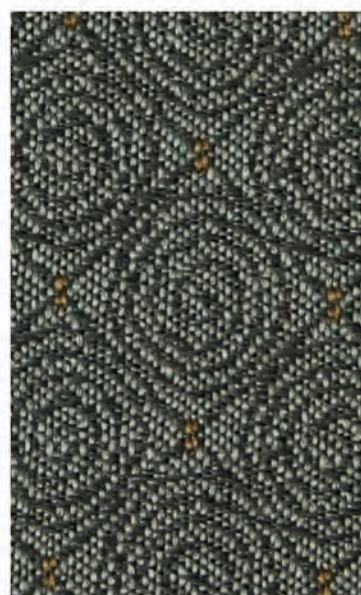
GRASS



CAPRI

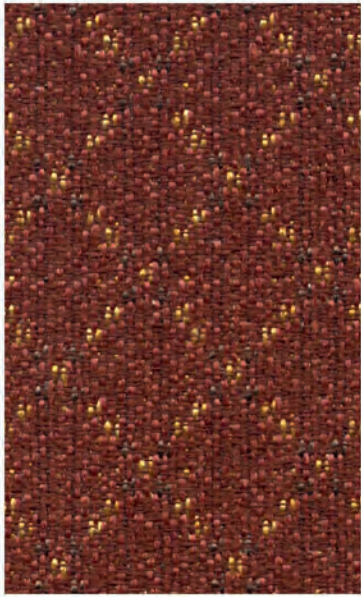


BONGO



DEEP SEA

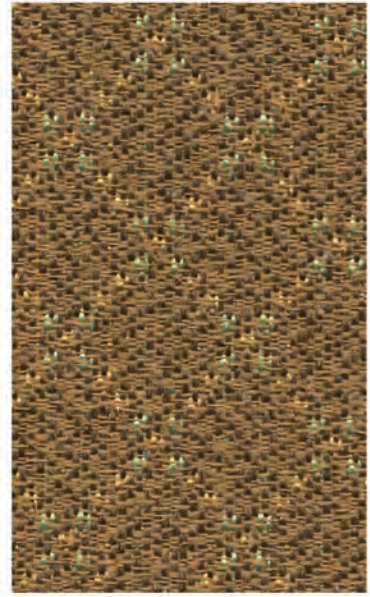
LUKKE



RUST



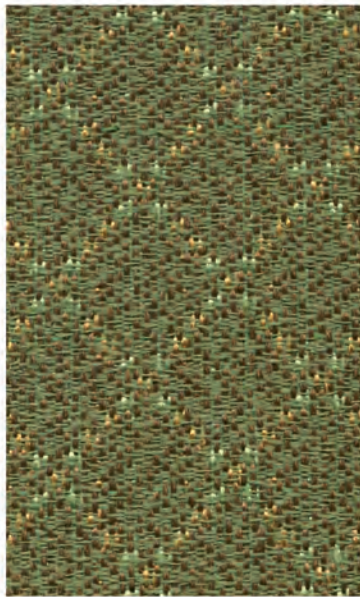
HOT



MIMOSA



SUMMER



GRASS



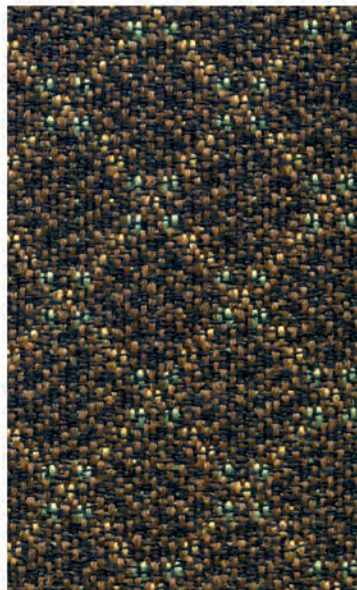
DERBY



MOCHA



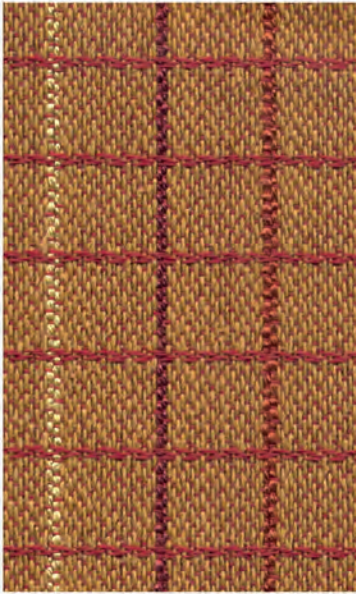
LUGGAGE



CHIP



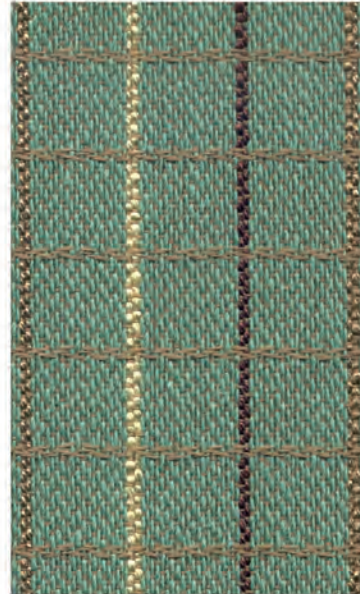
SLATE



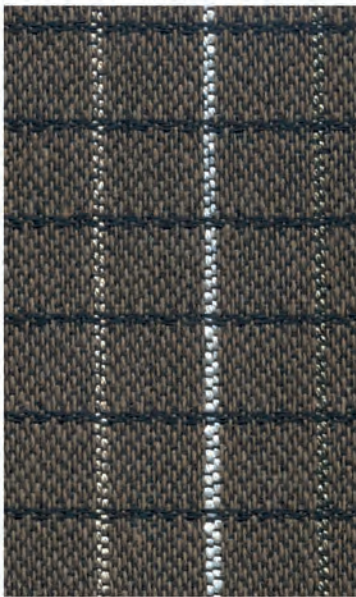
SPICE



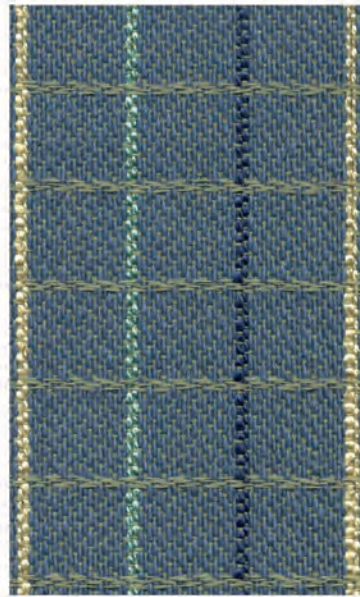
MIMOSA



SEABREEZE



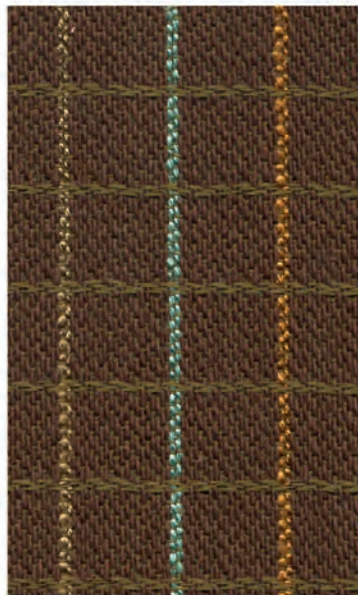
GRANITE



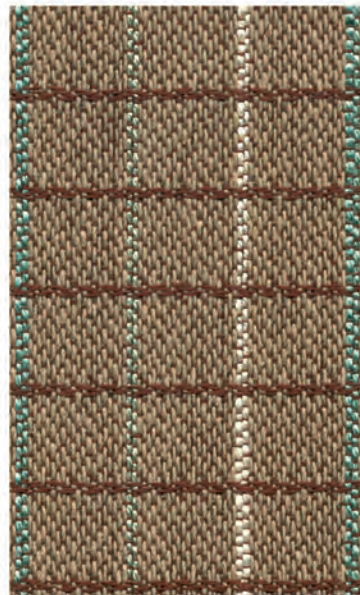
NAUTICA



STONE



CHOCOLATE



MOCHA

R
A
V
E

TECHNICAL DATA

PATTERN	CONTENT	REPEAT	WIDTH	WEIGHT	DESIGN
AGATHY	55% POLYESTER 45% OLEFIN	4.8" V 3.4" H	54"	.60 LB PER YARD	RAILROADED
ARGENTO	60% OLEFIN 40% POLYESTER	1" V 1" H	54"	.90 LB PER YARD	RAILROADED
CANTATA	57% POLYESTER 43% OLEFIN	4.2" V 6.8" H	54"	.75 LB PER YARD	RAILROADED
CHINCHILLA	55% POLYESTER 45% OLEFIN	1.38" V 1.38" H	54"	.75 LB PER YARD	RAILROADED
LUKE	69% OLEFIN 31% POLYESTER	.88" V .1" H	54"	.66 LB PER YARD	RAILROADED
RAVE	57% COTTON 32% POLYESTER 11% RAYON	1.69" V .5" H	54"	.65 LB PER YARD	RAILROADED

ABRASION: 30,000 DOUBLE RUBS (HEAVY DUTY)

CLEANING CODE: S

BACKING: LAYTEX-ACRYLIC

FLAMMABILITY: CAL. 117-E/BIFMA CLASS I
UFAC CLASS I
NFPA 260 CLASS I



P.O. BOX 200
AXTON, VA 24054
P. 276-650-3356 F. 276-650-3747
TOLL FREE FAX: 800-404-9590
WWW.ACFURNITURE.COM